

RESEARCH

Open Access



Influence of land cover features on avian community and potential conservation priority areas for biodiversity at a Ramsar site in India

Souvik Barik¹, Goutam Kumar Saha¹ and Subhendu Mazumdar^{2*}

Abstract

Background: Wetlands provide diverse ecological services to sustain rich biodiversity, but they are recklessly exploited around the globe. East Kolkata Wetlands (EKW; Ramsar site No. 1208, ~ 125 km²) was once very rich in faunal diversity that declined over the years due to various anthropogenic pressures. In such scenarios, effective management plans need to contemplate local and landscape level initiatives and prioritize areas for conservation. Studying the foraging guild structure and spatial patterns of relationship between bird and its environment provides important insight of ecological processes of avifauna. Thus, we carried out extensive surveys in 142 point count stations to explore the diversity and foraging guild structure of birds in EKW. We addressed two important questions that how bird diversity varied from the outer periphery of the city towards the wetlands and how bird diversity is influenced by land cover features at local and landscape level in wetland complex. The goal of this study was to prepare a spatial map of avian diversity and to find the conservation priority areas for birds in this internationally recognized wetland complex.

Results: We recorded 94 species of birds and the Shannon diversity index values ranged between 1.249 and 3.189. We found that the avian diversity increased with increasing distance from city periphery. Omnivores and insectivores were the dominant foraging guilds, followed by carnivores, granivores, frugivores and piscivores. Generalized Linear Models revealed that bird communities were positively influenced by areas of wetlands, dikes and banks, agricultural field and emergent vegetation, and negatively influenced by built-up area. In the projected spatial map of species diversity, 74.15 km² area has high diversity. Finally, we identified 12.82 km² of top 10% conservation priority areas.

Conclusions: Low bird diversity near city periphery is related to habitat degradation due to anthropogenic pressure. Dominance of omnivores and insectivores indicates a possible impact of urbanization in EKW. We suggest that a mix of agricultural field, wetland areas and emergent vegetation helps to sustain a greater avian community. Besides, protection of conservation priority areas, restoration of the degraded habitats and reduction of threats (particularly in the north-eastern parts of EKW near the city periphery) will ensure the conservation of avifauna, and also the overall biodiversity of EKW.

Keywords: Bird diversity, Spatial mapping, FRAGSTATS, ZONATION, Wetland management, East Kolkata Wetlands

Background

Wetlands are fragile ecosystems (Fraser and Keddy 2005) that provide several vital ecological services and play very important role in sustaining biodiversity (Leibowitz 2003; Millennium Ecosystem Assessment [MEA] 2005). However, wetlands are diminishing worldwide (Millennium Ecosystem Assessment [MEA] 2005; Mazumdar

*Correspondence: subhendumazumdar@gmail.com

² Department of Zoology, Shibpur Dinobundhoo Institution (College), Shibpur, Howrah, India

Full list of author information is available at the end of the article

and Saha 2016). East Kolkata Wetlands (henceforth EKW) is a unique wetland ecosystem (Parihar et al. 2013) and is recognized as a 'Wetland of International Importance' (Ramsar Convention 2002). It is unique being the largest resource-recycling system of the world, where large volumes of wastewaters of Kolkata metropolis are treated (Mukherjee and Chakraborty 2016). The wetland was once very rich in floral and faunal diversity, which declined over the years due to rapid population growth, unplanned urbanization and encroachment of certain parts of wetlands due to flourishing real estate sector (Bhattacharyya et al. 2008; Parihar et al. 2013; Ghosh et al. 2018). Studies carried out in EKW had earlier recorded 271 avian species, but, the shrinkage and transformation of EKW and degradation of the habitat quality due to various anthropogenic activities (Ghosh et al. 2018) have led to the local disappearance of 109 species, mostly the aquatic birds, from the wetland complex (EKWMA 2010). This demands a conservation oriented management plan for this unique ecosystem to ensure the continued existence of existing biodiversity (Parihar et al. 2013). Such conservation planning needs comprehensive understanding of the relationships of the organisms with their respective environment (O'Neil and Carey 1986).

Birds are sensitive to environmental changes and are therefore, frequently used as indicators for various ecological studies and often considered as good surrogate of biodiversity in a particular area (Alexandrino et al. 2016). Besides, local and landscape level characteristics of wetlands often influence avian ecological processes such as habitat dependencies, foraging, distribution (Bennett et al. 2009; Douglas et al. 2010; Lee and Carroll 2014). Wetland features like water area, dikes and banks and adjacent vegetation cover, as well as the crop fields often influence wetland-dependent bird communities (Sundar and Kittur 2013; Barik et al. 2021a, b, c). Bird conservation plans need to consider the influence of various environmental features at local, as well as landscape level spatial extents on the avian communities (Lee and Carroll 2014). Earlier studies on the birds of EKW mostly provided only the list of avian species encountered (Ghosh and Sen 1987; Ghosh 1990; Bhattacharyya et al. 2008; EKWMA 2010; Saha et al. 2014). However, studies on the relationship between avian diversity and wetland habitat features at local and landscape level spatial scales are less and are particularly non-existing in EKW.

In the present study, first we analysed the species richness and abundance of birds belonging to different foraging guilds, which is unexplored in EKW. Studies on foraging guild structure provide a clear understanding of avian community structure and adaptation of birds towards changing physical environments (Snep et al.

2015; Sohail and Sharma 2020). Secondly, we hypothesized that the bird diversity in EKW increased with increasing distance from Kolkata Municipal Corporation (henceforth, KMC) boundary towards the wetland. Next, we addressed an important question of how bird diversity is influenced by land cover features at local and landscape level spatial extents in wetland complex. Also, wetland authorities are interested to know the areas with rich avian diversity to prioritize areas for conservation initiatives. In any landscape, areas and land cover features that support high bird diversity need to be prioritized for conservation and management (Moilanen et al. 2011). Such conjointly designed conservation and management strategy will ensure the long-term retention of bird diversity of EKW (Moilanen et al. 2011; Giosa et al. 2018). Therefore, our aim was to find the high bird diversity areas, for this purpose we projected a spatial map of bird diversity. Finally, by using the spatial map of bird diversity and important land cover features, we identified the conservation priority areas for birds in an internationally recognized wetland complex for future conservation, which is undergoing land cover changes and habitat degradation over the years.

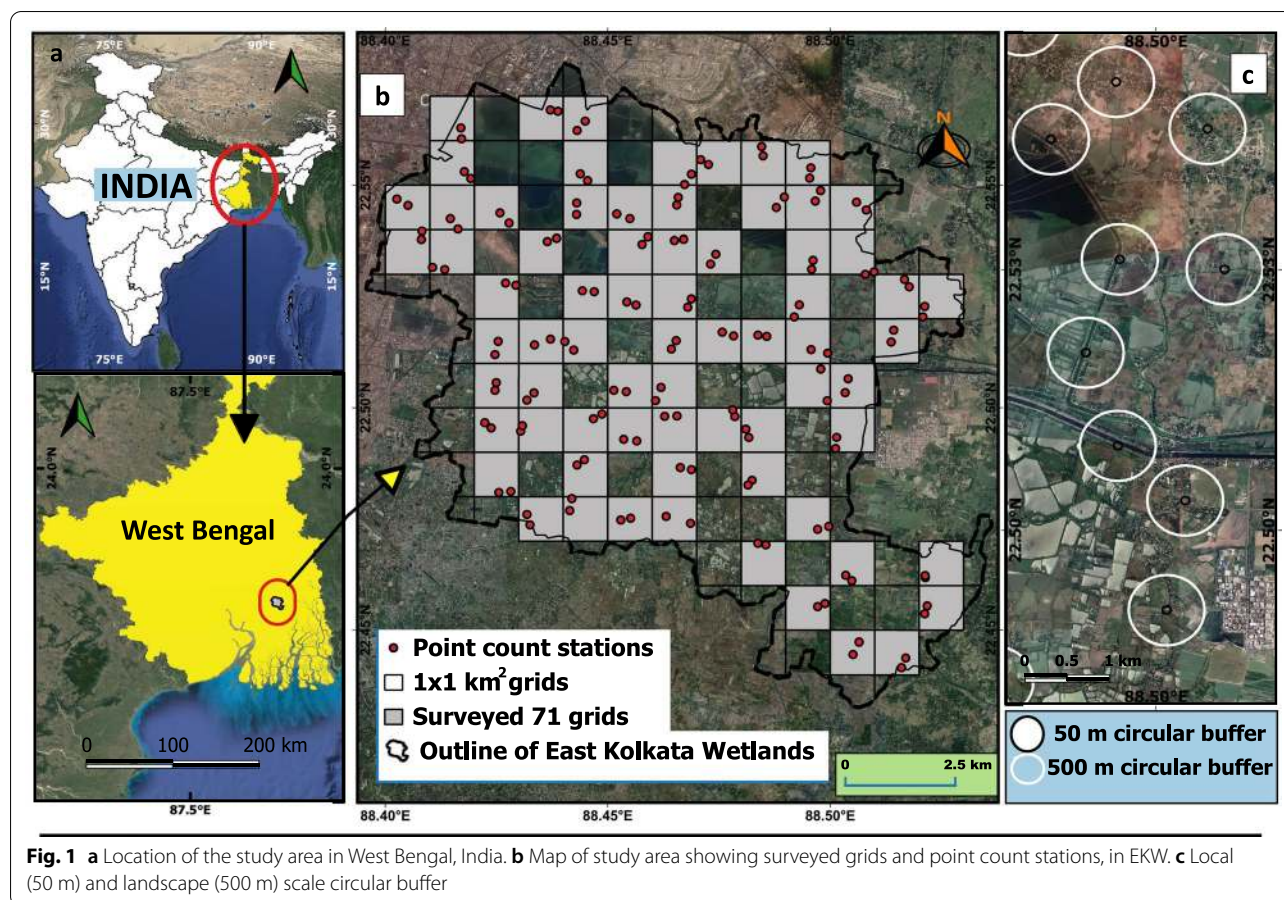
Materials and methods

Study area

The present study was carried out in EKW, which is situated on the eastern part of Kolkata, West Bengal India (Fig. 1a, b; latitude: 22°25'–22°40'N; longitude: 88°22'–88°55'E, altitude: 1–5 m asl; area: ~125 km²). This is a wetland of international importance delivering environmental benefits worth \$38.54 million and was declared as Ramsar site in November 2002 (Bhattacharyya et al. 2008). The land use of EKW primarily includes sewage water channels, vast stretches of sewage-fed aquaculture ponds, shallow marshlands, dikes, agricultural fields, residential areas and dumping grounds. The depth of most of the wetlands ranges between 0.7 and 3 m. Floating macrophytes are often present near the banks of the aquaculture ponds, while the areas not used for pisciculture harbour emergent macrophytes along with other wetland-associated vegetation (Bhattacharyya et al. 2008).

Bird surveys

Surveys conducted at a series of point locations (point counts) are a common tool for ecological monitoring, particularly for birds (Bibby et al. 2000). Initially 116 1×1 km² grid layer was overlaid on the surface falling inside the boundary of EKW (Fig. 1b), then 71 grids were selected (through random number generation and based on accessibility). Two points were randomly placed in each of these 71 selected grids keeping a minimum



gap of 250 m between two adjacent points (Fig. 1b). Then, surveys were carried out in each of the 142 bird count stations (71 grids \times 2 stations per grid) four times between June 2019 and March 2020. Point counts were carried out during morning (between 06:00 and 10:00 when the birds were most active) wherein the individual birds belonging to different species (through visual observation or listening to their calls) were recorded for 10 min (Bibby et al. 2000).

Bird species and functional classification

Birds were identified and their dispersal status (resident or migratory) was noted from standard field guides (Ali et al. 1987; Grimmett et al. 2013). Thereafter, we calculated Shannon diversity indices of avifauna ($H = -\sum p_i \ln p_i$, where p_i = proportion of individuals that belong to species i , Shannon and Weaver 1949). ‘Water birds’ were categorized as per wetland bird list provided by Wetland International (<http://wpe.wetlands.org/lwwhatrwb>) and the remaining birds are categorized as ‘terrestrial birds’. We grouped the avian species into six foraging guilds such as omnivorous, insectivorous, carnivorous, piscivorous, granivorous and frugivorous following Sohail and

Sharma (2020). The diets of the birds were also determined based on our field observation as well as referring to HBW Alive (2021) (Additional file 1).

Local and landscape-scale variables selection

We considered land cover types within 50 m and 500 m circular buffers around the point count stations as local-scale and landscape-scale variables, respectively (Table 1; Fig. 1c; Bibby et al. 2000; Lee and Carroll 2014; Litteral and Shochat 2017). Local scale land cover variables were assessed using high resolution Google Earth satellite image (~ 1 m spatial resolution), while landscape-scale variables were measured using Sentinel-2 satellite images (Barik et al. 2021a, b, c; Lamy et al. 2016). The Sentinel-2 satellite images with minimum cloud cover (15 November 2020) downloaded from USGS Earth Explorer (<https://earthexplorer.usgs.gov>) and prepared the present land cover map of the study area (with 10 m resolution, Fig. 2) in QGIS through supervised ‘minimum distance classification’ (Abburu and Golla 2015) using Semi-automatic Classification Plugin (Congedo 2014, 2016). We prepared an error ‘matrix’ by using a total of 9160 ground truth points for accuracy estimation of the land cover layer of

Table 1 Description of local and landscape-scale land cover classes within study area

	Land use land cover classes	Description
Local scale	Water area	Areas with standing water cover
	Dikes and banks	Areas of embankment for controlling or holding the waters of the bheri and ponds
	Agricultural field	Arable land for different crops, vegetables
	Tree cover	Area of the tree canopy area when viewed from above
	Open ground	Areas of fallow lands play grounds and barren lands
	Built-up area	Areas of house, buildings, etc
Landscape scale	Wetlands	Areas of bheri, ponds, and lakes
	Dikes and banks	Areas of embankment for controlling or holding the waters of the bheri and ponds
	Emergent vegetation	Areas where marsh, uncultivated shrubs and bushes were seen to grow
	Agricultural field	Arable land with standing crops, vegetables
	Fallow lands	Arable land without standing crops, vegetables
	Tree cover	Area of the tree canopy area when viewed from above
	Human-settlements	Areas of urban and rural settlements
	Barren lands	Areas of without any vegetation cover

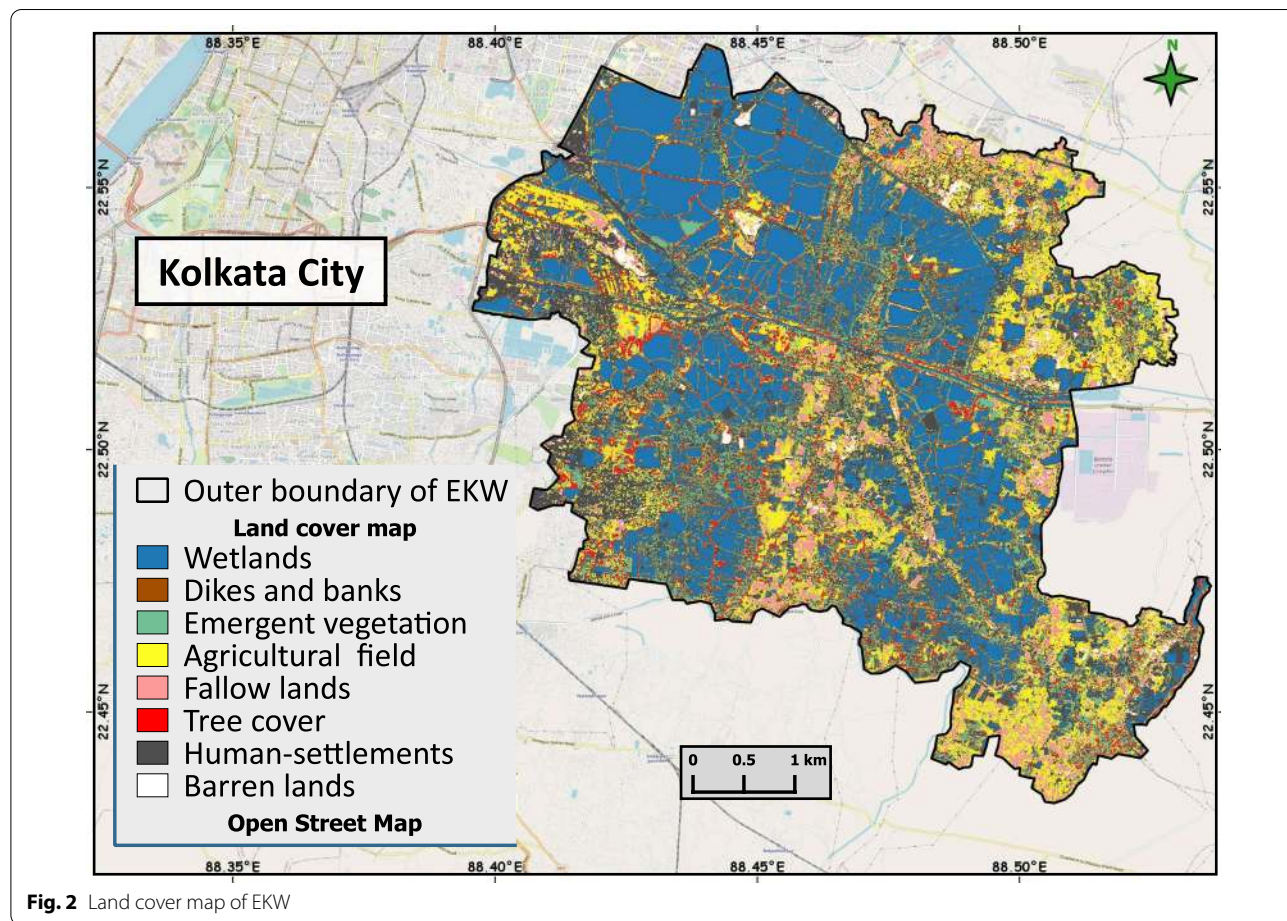


Fig. 2 Land cover map of EKW

the study area (Campbell 1996), which revealed 96.56% overall accuracy (>85% considered as standard limit by Anderson et al. 1976) and kappa coefficient 0.96 (Table 2)

indicating very good to excellent accuracy (Cohen 1960; Landis and Koch 1977). We used FRAGSTATS software (ver. 4, McGarigal 2015) derived class area metrics (i.e. the

sum of the areas of all patches belonging to the respective land cover class) to quantify the areas of each land cover class within 500 m circular buffer. However, the samples need to be non-overlapping, spatially independent landscapes (Pasher et al. 2013). Hence, the overlapping sampling sites were removed prior to landscape level analyses (Koper and Schmiegelow 2006). So, we carried out the landscape level analyses in 51 spatially non-overlapping landscape of 500 m circular buffer, where the observed mean distance (obtained from ‘nearest neighbour analysis’ in QGIS) between nearest neighbour is 1.25 km and nearest neighbour index is 1.44 with high positive significant z score ($z=6.05$, $p<0.05$). So, our landscape level sampling plots are spatially well-dispersed throughout the study area (Jude et al. 2018). The species diversity data obtained from the complete dataset of 142 study points (species diversity $_{\text{Mean} \pm \text{SE}}=2.262 \pm 0.132$) and data from 51 spatially non-overlapping study points (species diversity $_{\text{Mean} \pm \text{SE}}=2.277 \pm 0.023$) did not show any significant variation (Kruskal–Wallis tests: $H=181.81$, $df=182$, $p>0.05$), which indicates sampling adequacy (Kaliyadan and Kulkarni 2019).

Data analysis

Species richness and abundance data followed non-normal distribution (Shapiro–Wilk’s tests: $W_{\text{species richness}}=0.929$, $df=567$, $p<0.05$; $W_{\text{species abundance}}=0.851$, $df=567$, $p<0.05$). Hence, non-parametric Kruskal–Wallis tests were applied to compare species richness and abundance between terrestrial and water birds, as well as between different foraging guilds. We prepared scatter plots to illustrate the variation in species richness

and abundance of different species of avifauna belonging to each of the six different foraging guilds (Fig. 3). Further, we performed Agglomerative Hierarchical Cluster (AHC) analysis using Jaccard’s similarity coefficient (Krebs 1989; Manly 1994) and constructed a dendrogram using unweighted pair-group average (UPGA; Hammer et al. 2001) in ‘BinMat’ package (van Steenderen 2020) of R to show similarities in foraging guild structure among observed bird families in EKW (Fig. 4).

Thereafter, we measured the linear distance of each point count stations in EKW from the KMC boundary in QGIS (ver. 3.6) and calculated the Shannon indices of bird diversity at each point count station in PAST (ver. 3.06) software (Hammer et al. 2001). Shapiro–Wilk’s tests revealed that the species diversity data at local ($W=0.995$; $df=567$, $p>0.05$) and landscape scale ($W=0.994$, $df=203$, $p>0.05$) were normally distributed, thus we performed Generalized linear models (henceforth, GLM) with Gaussian error distribution and identity link (Zuur et al. 2009) to show how bird diversity of EKW influenced by distance and land cover variables at local and landscape level spatial extents using ‘MASS’ package (Ripley 2011). We created three separate models for each spatial scale. In the first model, we used only land cover features as explanatory variable. In the second model, we used distance to KMC boundary as explanatory variable. Third model was built by using land cover and distance variables jointly as explanatory variables. The multicollinearity in GLM was identified by calculating a variance inflation factor (VIF) for each variable in created models (Smith and Warren 2019) using ‘car’ (Fox and Weisberg 2019) and ‘performance’ package (Lüdecke

Table 2 Land cover accuracy assessment through error ‘matrix’

	Wetlands	Emergent vegetation	Agricultural field	Tree cover	Human-settlements	Barren lands	Dikes and banks	Fallow lands	Total
Wetlands	8318	0	0	0	0	0	0	0	8318
Emergent vegetation	0	273	2	1	2	0	0	0	278
Agricultural field	0	0	140	3	8	0	0	1	152
Tree cover	0	0	0	6	0	0	0	0	6
Human-settlements	0	0	4	0	289	2	2	0	297
Barren lands	0	0	0	0	0	42	0	0	42
Dikes and banks	0	0	0	0	0	0	10	0	10
Fallow lands	0	0	1	0	4	0	0	52	57
Total	8318	273	147	10	303	44	12	53	9160
Producer accuracy (%)	100	100	96.43	92.19	94.45	93.37	96.42	98.52	
User accuracy (%)	100	98.20	92.11	100	97.31	100	100	91.23	
Standard error	0	0.0009	0.0051	0.0023	0.0057	0.0015	0.0015	0.0038	

Overall accuracy = 96.56%, Kappa coefficient = 0.96

Table 3 Principal components (PC) loadings (correlation coefficients) obtained from principal component analysis (with varimax rotation) on landscape-scale land cover variables. (PC1 is correlated to wetland area, PC2 is correlated to emergent vegetation area, and PC3 is correlated to agricultural field area)

Landscape-scale land cover variables	Principal components		
	PC1	PC2	PC3
Wetlands	0.51*	− 0.25	0.30
Emergent vegetation	0.2	0.54*	− 0.26
Agricultural field	− 0.09	0.13	0.72*
Tree cover	− 0.35	0.37	0.45
Human habitation	0.3	0.39	− 0.19
Barren lands	0.2	− 0.54	0.06
Dikes and banks	− 0.63	− 0.21	− 0.3
Fallow lands	0.2	− 0.1	− 0.3
Variance explained	40%	29%	14%
Cumulative variance	40%	69%	83%

Bold fonts with **/** marked are the highest component loadings and values > 0.5 are used to explain the PC

et al. 2019) in R. We have calculated the generalized variance inflation factor (GVIF) for predictor variables at local scale (binary categorical variables ($n = 7$, $df > 1$) following Fox and Monette (1992) and found $GVIF < 1.1$. This clearly indicates low inter-correlation between the predictor variables. On the other hand, landscape-scale land cover variables are showing high multicollinearity ($VIF > 10$) in the model (Zuur et al. 2007; Smith and Warren 2019). To solve this multicollinearity issue, principal component analysis (PCA) was performed on landscape-scale land cover variables using ‘princomp’ function (Gwelo 2019). We retained three principal components (henceforth, PC) which collectively explained > 70% of the cumulative variance (considered as standard limit by Jolliffe 2002, Table 3). In our study, PC1, PC2 and PC3 explained 40, 29, 14% of variance, respectively, and thus collectively explained 83% of cumulative variance (Table 3). We used varimax rotation, which is the most common rotation method to simplify interpretation of principal components (Abdi and Williams 2010). Variables with correlation coefficient or loading values < 0.5 were not considered for interpretation of PCs following Lee and Carroll (2014). We found that PC1, PC2, and PC3 are positively correlated with areas of wetlands, emergent vegetation, agricultural field area, respectively (Table 3). Scores of the principal components were then used as explanatory variables in the subsequent GLMs at landscape scale (Graham 2003). Finally, we ranked all the models based on their respective second-order Akaike’s information criterion (henceforth, AICc) values using

“AICcmodavg” package (Mazerolle 2020) and the models with lowest AICc values were considered as the best model (Table 4). To find out the importance of explanatory variables in the best model, we standardized the estimate values following Silva et al. (2015) using “reghelper” package (Hughes et al. 2021) in R (Table 4, Fig. 5). All the statistical test were carried out in R studio (ver. 1.3.1073) and Past (ver. 4.03; Hammer et al. 2001).

Next, we plotted a spatial map of bird diversity over the surface of EKW (Fig. 6), through Inverse Distance Weighting function of QGIS (with default power value) which is commonly used in avian research (Li and Heap 2011; Gutiérrez-Tapia et al. 2018; Touhami et al. 2019). We used Shannon diversity index values of each surveyed locations to create the spatial map of bird diversity following Izaguirre and Ramírez-Alán (2018) and Morelli et al. (2018). One reasonable measure of efficiency of interpolated map is the root mean square error (RMSE) and the RMSE value of interpolated spatial map of diversity in our study was 0.0002, which indicates high accuracy (Ouabo et al. 2020). To develop a spatial conservation prioritization model we used the Zonation software (v. 3.1.0; Lehtomäki and Moilanen 2013). Zonation prioritizes the areas based on input layers (grid cells), which are simultaneously processed to assign a hierarchical rank to each cells. The cells with least values within the study area are discarded at the beginning and the most valuable cells are retained till the end. This process of progressive removal of cells may identify most important areas for conservation (Lehtomäki and Moilanen 2013). At present rate of urban expansion and wetland transformation in EKW (Ghosh et al. 2018) we also need to manage those land covers, which have positive influence on bird communities of EKW. Following Lehtomäki and Moilanen (2013) and Di Minin et al. (2014), we used the spatial map of bird diversity and the land cover layers (showing significant positive influence on avian diversity) as input layers in Zonation software. Equal weight was given to each of them and used the warp factor value of 50 (Moilanen et al. 2011; Di Minin et al. 2014). We then used the Core-Area Zonation function and identified the high-quality localities in the final output map (Lehtomäki and Moilanen 2013). Thus, top 10% conservation priority areas were identified in the Zonation output map of EKW (Fig. 7). We finally used a 50-m buffer around the top 10% conservation priority area, which may minimize the effects of anthropogenic disturbances in the conservation priority area (McElfish et al. 2008).

Results

Bird diversity and correlation with distance to outer periphery of KMC area

During the present study, we recorded a total of 27,623 individuals of birds belonging to 94 species, of which 26 species (27.66%) were water birds and 68 species were terrestrial birds (72.34%) and the species richness and abundance of terrestrial and water birds varied significantly (Kruskal–Wallis tests: $H_{\text{richness}} = 834.4$, $df = 1$, $p < 0.05$; $H_{\text{abundance}} = 725.4$, $df = 1$, $p < 0.05$; Dunn post hoc tests: $z_{\text{richness}} = 14.57$, $z_{\text{abundance}} = 14.05$, Bonferroni corrected p value < 0.05). All these 94 avian species fall under 14 orders and 41 families. Passeriformes, with 38 species of birds, was found to be the most diverse avian order in EKW. We found 13 species of winter visitor and remaining species were resident. Twenty one species having globally declining population trend were recorded during the present study, of which two species were near-threatened (Black-headed ibis *Threskiornis melanocephalus* and Alexandrine parakeet *Psittacula eupatria*), while the remaining species fall under the least concern category of IUCN red list (del Hoyo et al. 2014). The Shannon diversity indices values ranged between 1.249 to 3.189 and the obtained mean \pm SE values of Shannon diversity indices were 2.262 ± 0.013 .

Foraging guild structure and UPGA cluster analysis

The abundance (Kruskal–Wallis test: $H = 2118.3$, $df = 5$, $p < 0.05$) and richness ($H = 2190.1$, $df = 5$, $p < 0.05$) of avian species significantly varied between foraging guilds. Omnivores and insectivores were highest (31 species in each, 32.98%), followed by carnivores (19 species, 20.21%), granivores (6 species, 6.38%), frugivores (5 species, 5.32%) and piscivores (2 species, 2.13%). In the scatter plots, we observed dissimilar patterns in the abundance of birds belonging to different foraging guilds. The abundance of avian species belonging to omnivorous guild was highest, followed by carnivorous, insectivorous, granivorous, piscivorous and frugivorous (Fig. 3). AHC analysis revealed that the avian families recorded in the present study fall under eight distinct groups (Fig. 4), namely I = frugivorous (two families), II = piscivorous (only one family), III = granivorous (two families), V = carnivorous (five families), VI = insectivorous (13 families), VII = omnivores (14 families). Group IV and VIII shared more than one food resources and thus were categorized as carnivorous/insectivorous (one species) and omnivorous/insectivorous (three families), respectively.

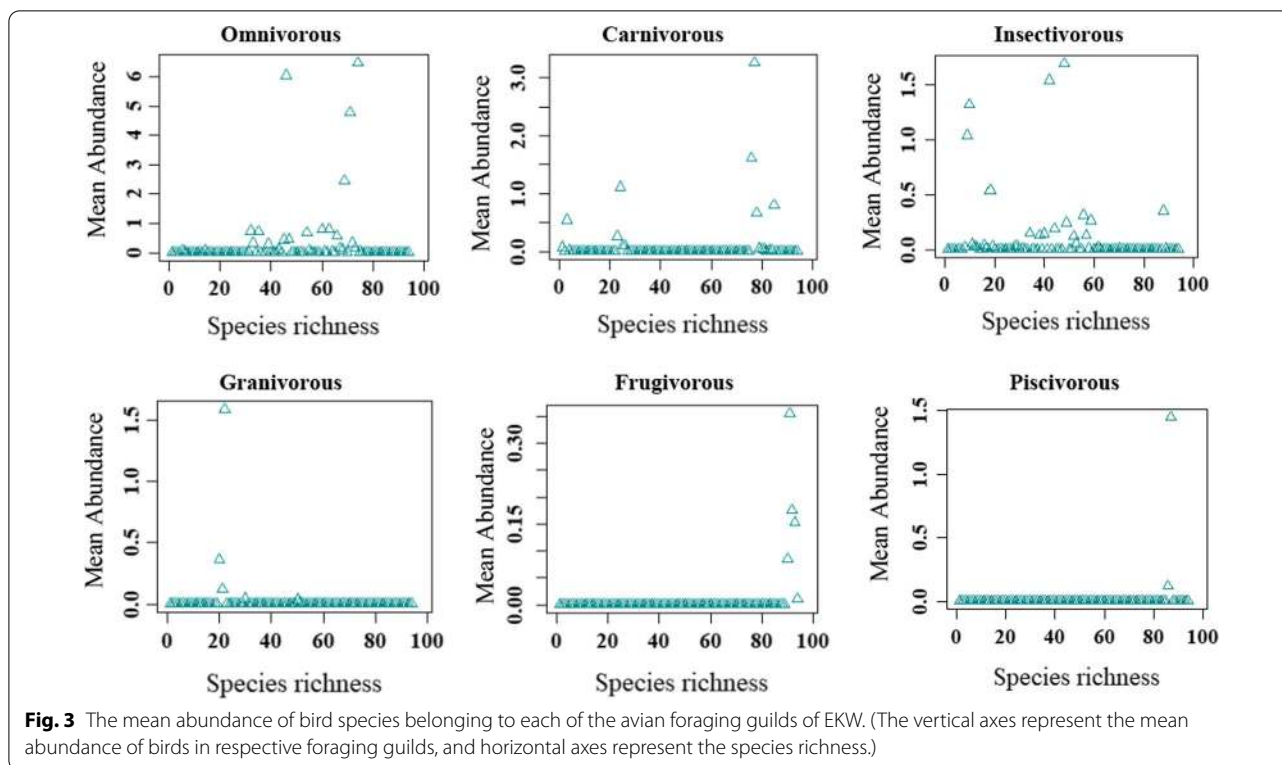


Fig. 3 The mean abundance of bird species belonging to each of the avian foraging guilds of EKW. (The vertical axes represent the mean abundance of birds in respective foraging guilds, and horizontal axes represent the species richness.)

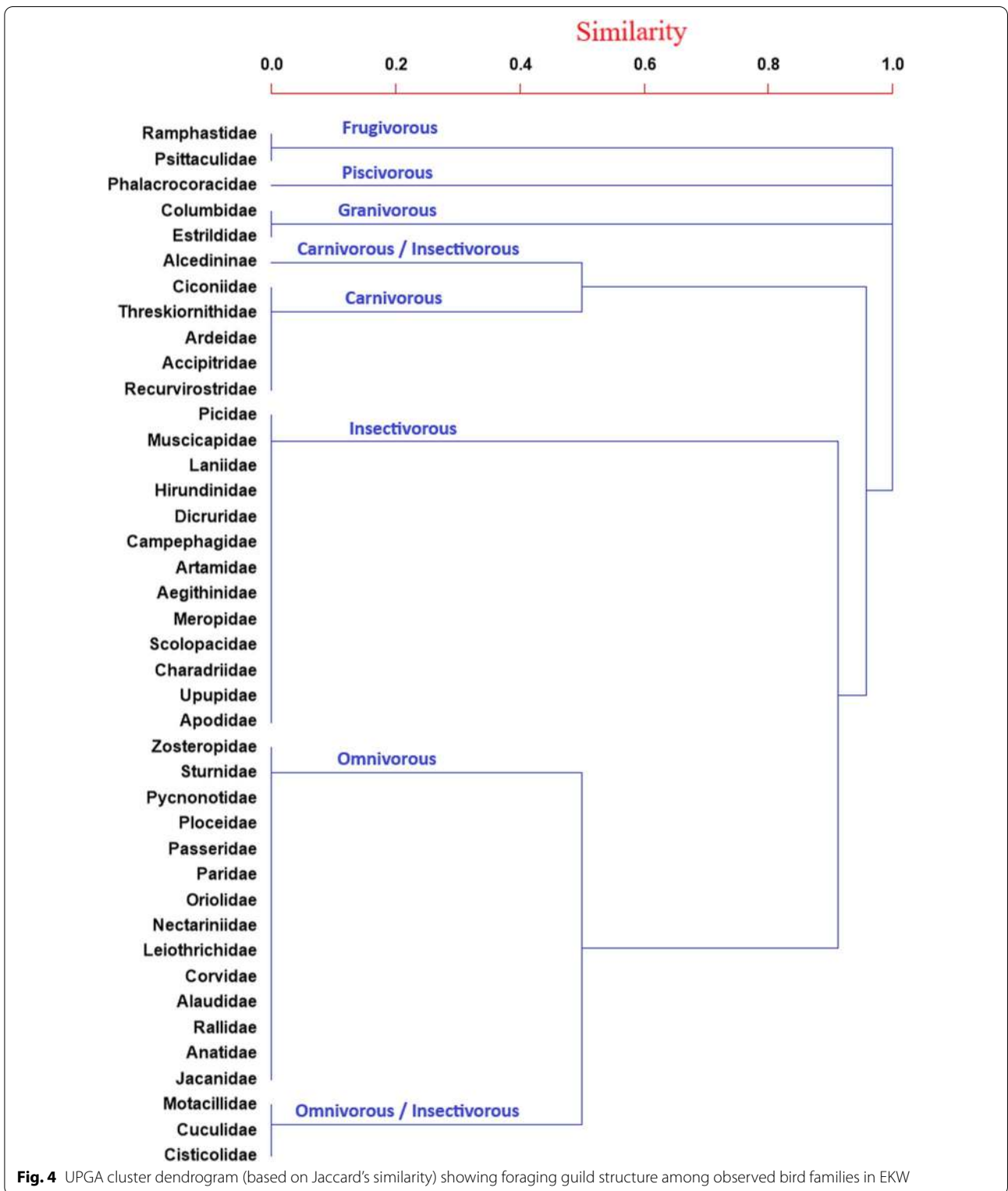


Fig. 4 UPGA cluster dendrogram (based on Jaccard's similarity) showing foraging guild structure among observed bird families in EKW

Table 4 Generalized linear models of bird diversity in relation to local and landscape-scale land cover variables and distance to KMC boundary variable

Spatial scales	Models	Variables (β estimate \pm SE)	t values	AICc values	
Local scale	1. glm(Bird diversity ~ WA + DB + AF + TC + OG + BA)	WA = - 0.01 \pm 0.016	WA = - 0.627	288.85	
		DB = 0.04 \pm 0.016	DB = 2.543		
	AF = 0.011 \pm 0.013	AF = 0.862			
	TC = 0.006 \pm 0.013	TC = 0.471			
	OG = 0.02 \pm 0.013	OG = 1.509			
	BA = - 0.052 \pm 0.014	BA = - 3.802			
Local scale	2. glm(Bird diversity ~ DKB)	DKB = 0.075 \pm 0.013	DKB = 5.848	272.82	
	3. glm(Bird diversity ~ WA + DB + AF + TC + OG + BA + DKB)	WA = - 0.001 \pm 0.015	WA = - 0.046	264.45	
		DB = 0.031 \pm 0.016	DB = 1.975		
AF = - 0.011 \pm 0.014		AF = - 0.823			
Landscape scale	1. glm(Bird diversity ~ PC1 + PC2 + PC3)	PC1 = 0.069 \pm 0.022	PC1 = 3.066	119.02	
		PC2 = 0.017 \pm 0.022	PC2 = 0.779		
		PC3 = 0.083 \pm 0.022	PC3 = 3.699		
	Landscape scale	2. glm(Bird diversity ~ DKB)	DKB = 0.095 \pm 0.023	DKB = 4.199	120.6
		3. glm(Bird diversity ~ PC1 + PC2 + PC3 + DKB)	PC1 = 0.119 \pm 0.022	PC1 = 5.406	83.49
			PC2 = 0.045 \pm 0.021	PC2 = 2.148	
	PC3 = 0.077 \pm 0.020		PC3 = 3.759		
	Landscape scale		DKB = 0.142 \pm 0.022	DKB = 6.351	

WA water area, DB dikes and banks, AF agricultural field, TC tree cover, OG open ground, BA built-up area, DKB distance to KMC boundary, PC principal component; bold fonts of variables indicate $p < 0.05$; The lowest AICc values indicate the best model

Local and landscape-scale bird response

The lowest AICc value revealed that the conjoint model containing land cover and distance to KMC boundary as explanatory variables were the best models both at local and landscape scales (Table 4). Relative importance of explanatory variables of the best GLM models is depicted in Fig. 5. Amongst the local-scale land cover variables, species diversity was positively influenced by presence of dikes and banks ($B = 0.031$) and negatively influenced by presence of built-up area ($B = - 0.046$) (Table 4, Fig. 5).

At landscape scale, GLM further revealed that PC1 (correlated to wetlands area, $B = 0.119$), PC2 (correlated to emergent vegetation area, $B = 0.045$) and PC3 (correlated to agricultural field areas, $B = 0.077$) positively influenced the species diversity (Table 4, Fig. 5). At both scales, we found that the bird diversity of EKW increased with increasing distance from KMC boundary (local scale: $B = 0.072$, landscape scale: $B = 0.142$) (Fig. 5).

Spatial map of species diversity and top conservation priority areas

We classified the spatial map of diversity into two categories (i) areas with Shannon diversity index < 2.262 and (ii) areas with Shannon diversity index > 2.262 . Thus, we identified 74.15 km² area with higher and 54.09 km² area with lower than mean species diversity in EKW (Fig. 6) and the land cover types falling under each of these classes are presented in Table 5. Based on relative importance of land cover variables (Fig. 5), we selected land cover layers of wetlands, dikes and banks, emergent vegetation, agricultural field, as well as, the spatial map of avian diversity as input layers for Zonation and identified 12.82 km² of top 10% conservation priority areas in EKW along with their respective land cover types (Table 5; Fig. 7).

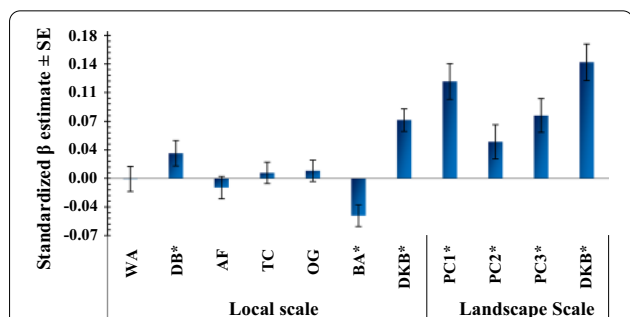
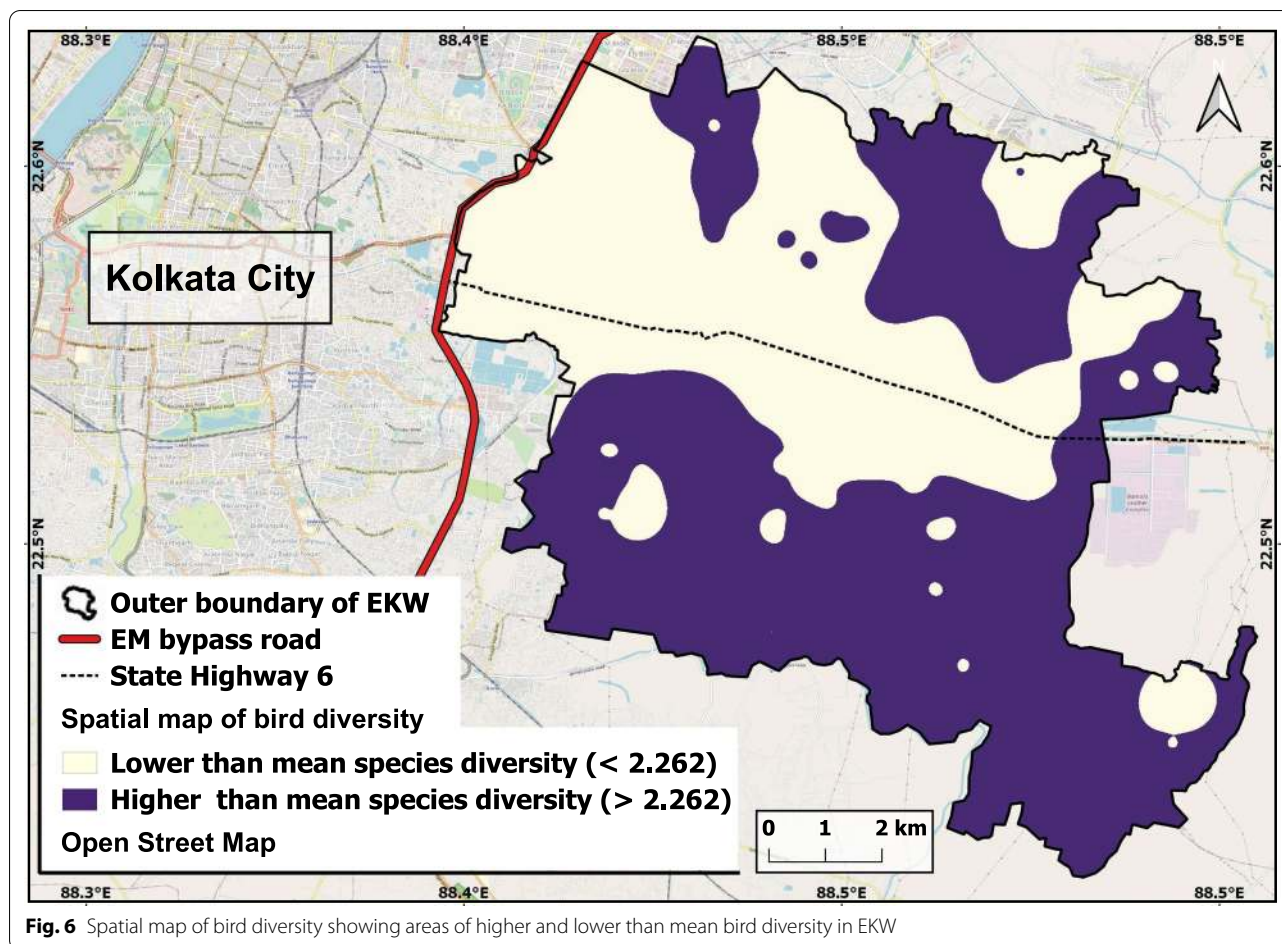


Fig. 5 Relative importance of variables (standardized β estimates) in the best GLM models at local and landscape scale (WA water area, DB dikes and banks, AF agricultural field, TC tree cover, OG open ground, BA built-up area, DKB distance to KMC boundary, PC principal component, SE standard error)

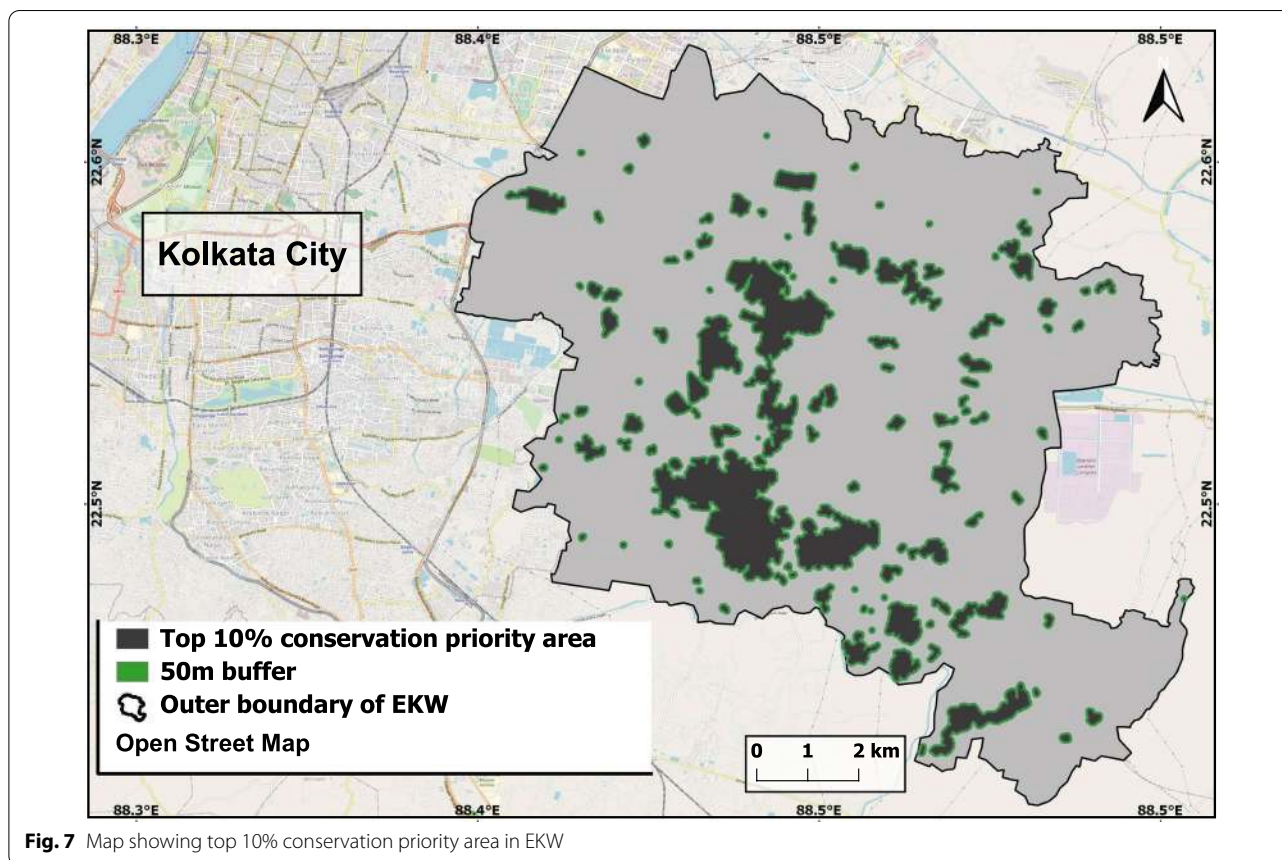


Discussion

Increasing wetland transformation in EKW reduces wetland cover (Ghosh et al. 2018), which is the major cause of decreasing water bird populations (Sica et al. 2020). Hence, despite EKW being a wetland, we found that the species richness and abundance of terrestrial birds were highest. On the other hand, urban expansion is known to adversely influence the avian communities living in the adjoining natural environments (Blair and Johnson 2008). We found that the species richness belonging to order Passeriformes was highest, which is also a possible indication of urbanization in EKW (La Sorte et al. 2018). The species richness and abundance varied across six foraging guilds (Fig. 3). Omnivores and insectivores were found to be the major foraging guild, followed by carnivores, granivores, frugivores and piscivores in our study area (Figs. 3 and 4). Urban expansion favours insectivorous birds, and the omnivores with wider dietary spectrum also thrive better in human-dominated landscapes (Sohail and Sharma 2020; Kurucz et al. 2021). Highest species richness of the omnivores and insectivores in our

study area also indicates a possible impact of urbanization in this wetland complex. On the other hand, frugivores require fruit-bearing plants and few number of frugivores is an indication of increased habitat degradation (Sohail and Sharma 2020). Also unexpectedly, despite EKW being a wetland complex, we found only two species of piscivores. Piscivores are reported to damage fish stocks (Harris et al. 2008). In EKW the fishermen often cover the commercial fishponds with fine fishnets, denying the access of the piscivores. Such denial of their access to preferred resource is disadvantageous for birds belonging to such specialist foraging guild (Burin et al. 2016).

In agreement to our second hypothesis, we found that multiple land cover features at local and landscape scale influence the bird species diversity (Table 4, Fig. 5). Among the land cover features, agricultural field positively influence the bird diversity at landscape scale (Table 4, Fig. 5). The agricultural fields serve as important nesting and foraging habitat for several bird species (Wilcoxon et al. 2018). The high density



of paddy stands in the agricultural fields also provides necessary refuge and hiding places from their natural enemies and the narrow muddy borders between adjacent agricultural fields are often reported to be used by the birds for dispersal (King et al. 2010; Wilcoxon et al. 2018; Barik et al. 2021b). Mixed cropping patterns increase the spatiotemporal heterogeneity of agricultural fields in EKW, which are known to positively influence the avian communities (Thenail et al. 2009; Siriwardena et al. 2012; Sarkar and Parihar 2014). At landscape scale, we also found a positive influence of wetland area on avian diversity. Ducks and other piscivorous birds in the study area depend on open waters (Zhang et al. 2018). The shallow wetlands in parts of EKW (Barik et al. 2021b; EKWMA and WISA 2021) also provide foraging habitat for several water birds, particularly waders (Colwell and Taft 2000). Aquatic insects are abundant in waterbodies of EKW (Saha et al. 2017), which also influence avifauna (Ferber et al. 2014). We found that bird diversity was positively influenced by presence of dikes and banks at local scale (Table 4, Fig. 5). Presence of diverse plants provides refuge for several wetland-dependent birds (Barik et al.

2021b). On other hand, connectivity between resource patches is important for safe dispersal of individuals, thereby providing them with optimal foraging and mating conditions (St-Louis et al. 2014). Dikes in EKW provide such habitat connectivity for several species of birds (Barik et al. 2021b). Emergent vegetation patches are sparsely distributed in EKW and provide natural habitats for marsh dwelling birds (e.g., bitterns, birds species of family Rallidae, etc.), herons, munias (Family Estrildidae), shrikes, warblers and prinias (Grimmett et al. 2013; Rajpar and Zakaria 2011; Bradshaw et al. 2020). Emergent vegetations on dikes and banks often provide hiding places for several birds (Barik et al. 2021b). Therefore, it is an important land cover feature and positively influences the bird diversity at landscape level (Table 4, Fig. 5).

On the contrary, built-up areas adversely influenced the bird diversity at local scale (Table 4, Fig. 5). Expansion of human habitations often create disturbances. Usually the generalist species show high adaptability in such altered environments, while the specialist species are less adaptive to such disturbances (Sultana et al. 2021). Generally, rapid urban growth leads to 'biotic homogenization' (McKinney 2006) wherein only urban exploiters or

Table 5 Areas (km²) of land cover types falling under higher and lower than mean species diversity and top 10% conservation priority areas in EKW

Land cover	Lower than mean species diversity (< 2.262)	Higher than mean species diversity (> 2.262)	Top 10% conservation priority area
Wetlands	17.80	19.22	2.75
Emergent vegetation	6.92	11.01	2.75
Agricultural field	7.89	13.14	0.56
Tree cover	2.67	3.48	0.01
Human-settlements	10.25	13.83	2.75
Barren lands	0.90	0.93	0.23
Dikes and banks	4.96	7.58	2.75
Fallow lands	2.71	4.96	1.02
Total	54.09	74.15	12.82

synurbic species (Palomino and Carrascal 2006) flourish by using the artificial and built-up structures as nesting sites and by foraging on abundant and predictable food refuse discarded by city dwellers (Shochat et al. 2010). This corroborates our hypothesis that the species diversity in EKW increased with increasing distance from the city boundary of Kolkata, as the dominance of urban exploiters increases, but the overall species richness declines near the city boundary as compared to the natural areas away from the city.

Spatial conservation prioritization and management implications

Rapid urbanization has already resulted in the decline in avian species richness reported earlier from some of the northwest areas of EKW (Bhattacharyya et al. 2008). In EKW, only 162 species have been noted during the last 30 years, among them several migratory bird species were infrequently detected (EKWMA and WISA 2021). Increasing road density is known to negatively influence various species of birds (Husby 2016). We also noticed that many areas with lower avian diversity in EKW (i.e. diversity index value < mean species diversity index of the study area) are situated adjacent to the major roads Eastern Metropolitan Bypass road (EM bypass) and State Highway 6 (SH6) (Fig. 6). The rate of wetland transformation is also higher in the western portion of EKW (Ghosh et al. 2018), which includes areas adjacent to Kolkata city. So, the urban avoiders still thriving in the western part of EKW are under serious threats due to intense urbanization pressure. On the other hand, the wetland transformation rate is lower in the south-eastern portion of EKW and we found 11.43 km² areas with higher than mean species diversity in this area.

It is evident from our findings that the association of land cover features with the avian assemblages varied at

local and landscape scales, which conjointly shape the bird communities of an area. Hence, we need to consider both of them while framing conservation planning (Litteral and Shochat 2017). Furthermore, we have projected the top 10% conservation priority areas in EKW (Fig. 7), of which almost half is under wetland cover, emergent vegetation and agricultural field (Table 5). Alarmingly, fertilizers and pesticides are extensively used in those agricultural fields (Ghosh et al. 2018) thereby posing an imminent threat of the dearth of various resources there, particularly the availability of insects (Benton et al. 2002; Goulson 2014). Intensive and commercial sewage-fed pisciculture is practised in these water bodies of EKW, which leads to the bioaccumulation of harmful heavy metals in cultured fishes (Dutta and Chakraborty 2017). This poses a potential risk to the piscivores found in EKW. Emergent vegetation patches are vanishing due to urban encroachment, crop and fish farming activity. We also noticed that several birds died being entangled in fishnets (pers. obs.), and locals reported that a few species are captured for illegal pet trade. All these are emerging as serious threats to bird species in EKW, as well as many wetland habitats across the globe. Nevertheless, these potential risks need to be quantified in future studies.

Conclusion

We described the foraging guild structure of avifauna in EKW. Next, we prepared a spatial map of avian diversity in EKW, and identified high species diversity areas for bird conservation. Our study suggests that wetland management strategy needs to contemplate both local and landscape level characteristics to improve overall avifaunal diversity of EKW. Our findings clearly indicate that a mix of agricultural field, wetlands areas and emergent vegetation can support a high number of bird species in

EKW. Besides, protection of important land use features and the remaining natural habitats, as well as, restoration of degraded habitats and reduction of anthropogenic threats (particularly in the north-eastern parts of EKW and areas adjacent to the city periphery, EM bypass and SH6), involving local communities might serve as a decisive factor for the conservation of the avian diversity in EKW. Birds serve as important surrogate of biodiversity, and are useful to prioritize areas for conservation of biodiversity across the globe. Therefore, prioritizing conservation initiatives in the top 10% areas projected during the present study will not only be cost effective (Moilanen et al. 2011) for the protection of birds, but also will be useful in conserving the overall biodiversity of these areas. Maintenance of shrubs and emergent vegetation along the dikes and banks of the wetlands (Barik et al. 2021b), prevention of the use of nets over commercial fish ponds and lowering the anthropogenic pressure in these high diversity areas are crucial. Such conservation initiatives need to be urgently implemented in those top 10% priority areas of this internationally acclaimed wetland engaging all stakeholders (landholders, fishermen, farmers etc.). Awareness campaigns among the local residents, particularly those residing in the projected conservation priority areas, might be useful in sustaining the avian diversity (Sterling et al. 2017) of EKW. Similar studies may be carried out in prioritizing the areas for conservation of avifauna in wetlands across the globe, particularly those situated at human-dominated landscapes.

Abbreviations

EKW: East Kolkata Wetlands; KMC: Kolkata Municipal Corporation; HBW: Handbook of the birds of the wild; PAST: Paleontological statistics software; AHC: Agglomerative hierarchical cluster; UPGA: Unweighted pair-group average; GLM: Generalized linear model; VIF: Variance inflation factor; AICc: Second-order Akaike's information criterion; PCA: Principal component analysis; PC: Principal components; WA: Water area; DB: Dikes and banks; AF: Agricultural field; TC: Tree cover; OG: Open ground; BA: Built-up area; DKMCB: Distance to KMC boundary.

Supplementary Information

The online version contains supplementary material available at <https://doi.org/10.1186/s13717-022-00369-x>.

Additional file 1. List of birds (order, family, common and scientific names, foraging guild structure and dispersal status) recorded from East Kolkata Wetlands, West Bengal, India.

Acknowledgements

We express our gratitude for the Head, Department of Zoology, University of Calcutta and the Principal, Shibpur Dinobundhoo Institution (College) for their encouragement and infrastructural support. We thank Mr. Souvik Chakraborty (Data analyst, IBM, Kolkata) for his statistical assistance. We also thank Editor-in-Chief Jiquan Chen, and two anonymous reviewers for their constructive input on earlier versions of this paper, which helped us to improve this article.

Authors' contributions

SM and GKS designed the study. SB carried out field surveys. SB and SM did the data analyses and wrote the draft manuscript. GKS helped to improve the manuscript. All authors read and approved the final manuscript.

Funding

The expenses during the research were borne by the authors and not funded by any external agency.

Availability of data and materials

All data produced from this study are provided in this manuscript.

Declarations

Ethics approval and consent to participate

This paper contains findings of our original research. Applicable national and/or international guidelines for animal ethics were followed and no animal was harmed during the study. We adhered to the ethical standards in this study and in production of this manuscript.

Consent for publication

The article submitted herewith contains the findings of our original research, is not under consideration for publication elsewhere, and is approved by all authors of this manuscript.

Competing interests

The authors declare that they have no conflict of interest (financial or non-financial) in publishing the manuscript.

Author details

¹Department of Zoology, University of Calcutta, 35, Ballygunge Circular Road, Kolkata 700019, India. ²Department of Zoology, Shibpur Dinobundhoo Institution (College), Shibpur, Howrah, India.

Received: 17 November 2021 Accepted: 7 February 2022

Published online: 07 March 2022

References

- Abburu S, Golla SB (2015) Satellite image classification methods and techniques: a review. *Int J Comput Appl* 119(8):20–25
- Abdi H, Williams LJ (2010) Principal components analysis. *Wires Comp Stat* 2:433–450
- Alexandrino ER, Buechley ER, Piratelli AJ, de Barros KM, de Andrade MR, Şekercioğlu ÇH, Silva WR, do Couto HT (2016) Bird sensitivity to disturbance as an indicator of forest patch conditions: an issue in environmental assessments. *Ecol Indic* 66:369–381
- Ali S, Ripley SD, Dick JH (1987) Compact handbook of the birds of India and Pakistan. Oxford University Press, Delhi
- Anderson JR, Hardy EE, Roach JT, Witmer RE (1976) A land use and land cover classification system for use with remote sensor data. US Geological Survey Professional Paper 964. US Government Printing Office, USA
- Barik S, Saha GK, Mazumdar S (2021a) How the habitat features influence Black-headed Ibis (*Threskiornis melanocephalus*) in a suburban area? A study from Mid-West Bengal India. *Proc Zool Soc*. <https://doi.org/10.1007/s12595-021-00385-3>
- Barik S, Saha GK, Mazumdar S (2021b) Potentially suitable habitat, connectivity and priority conservation areas for White-breasted waterhen (*Amaurornis phoenicurus*) and Bronze-winged jacana (*Metopidius indicus*). *Wetlands* 41(3):1–15
- Barik S, Saha GK, Mazumdar S (2021c) Environmental features influencing Red-wattled Lapwing and River Lapwing in a suburban area of the lower Gangetic plains, West Bengal, India. *Wader Study* 128(3):247–254
- Bennett AF, Haslem A, Cheal DC, Clarke MF, Jones RN, Koehn JD, Lake PS, Lumsden LF, Lunt ID, Mackey BG, Nally RM (2009) Ecological processes: a key element in strategies for nature conservation. *Ecol Manag Restor* 10(3):192–199

- Benton TG, Bryant DM, Cole L, Crick HQ (2002) Linking agricultural practice to insect and bird populations: a historical study over three decades. *J Appl Ecol* 39(4):673–687
- Bhattacharyya A, Sen S, Roy PK, Mazumdar A (2008) A critical study on status of East Kolkata Wetlands with special emphasis on water birds as bio-indicator. In: Sengupta M, Dalwani R (eds) Proc. of Taal 2007: The 12th World Lake Conference, India: Ministry of Environment and Forests, Govt of India, pp 1561–1570
- Bibby CJ, Burgess ND, Hillis DM, Hill DA, Mustoe S (2000) Bird census techniques. Elsevier, Great Britain
- Blair RB, Johnson EM (2008) Suburban habitats and their role for birds in the urban–rural habitat network: points of local invasion and extinction? *Landscape Ecol* 23(10):1157–1169
- Bradshaw TM, Blake-Bradshaw AG, Fournier AM, Lancaster JD, O’Connell J, Jacques CN, Eichholz MW, Hagy HM (2020) Marsh bird occupancy of wetlands managed for waterfowl in the Midwestern USA. *PLoS ONE* 15(2):e0228980
- Burin G, Kissling WD, Guimarães PR, Şekercioğlu ÇH, Quental TB (2016) Omnivory in birds is a macroevolutionary sink. *Nat Commun* 7(1):11250
- Campbell JB (1996) Introduction to Remote Sensing, 2nd edn. Taylor and Francis, London
- Cohen J (1960) A coefficient of agreement for nominal scales. *Educ Psychol Meas* 20(1):37–46
- Colwell MA, Taft OW (2000) Waterbird communities in managed wetlands of varying water depth. *Waterbirds* 23(1):45–55
- Congedo L (2014) Land cover classification of cropland: a tutorial using the semi-automatic classification plugin for QGIS. Sapienza University, Rome
- Congedo L (2016) Semi-automatic classification plugin documentation. Release 6.0.1.1. 4(1):1–29 https://www.researchgate.net/publication/307593091_SemiAutomatic_Classification_Plugin_Documentation_Release_6011. Accessed 06 Oct 2021
- del Hoyo J, Collar NJ, Christie DA, Elliot A, Fishpool LDC (2014) Illustrated checklist of the birds of the world. Lynx Edicions, Barcelona
- Di Minin E, Veach V, Lehtomäki J, Montesino Pouzols F, Moilanen A (2014) A quick introduction to Zonation. Helsinki Yliopisto, Helsinki
- Douglas Robinson W, Hau M, Klasing KC, Wikelski M, Brawn JD, Austin SH, Tarwater CE, Ricklefs RE (2010) Diversification of life histories in New World birds. *Auk* 27(2):253–262
- Dutta S, Chakraborty S (2017) The effect of pollution on hydrological parameters analysis of East Kolkata Wetland Area. *Int J Dev Res* 7(9):15452–15458
- East Kolkata Wetlands Management Authority (EKWMA) (2010) EKW Management Plan. East Kolkata Wetlands Management Authority, India
- EKWMA, WISA (2021) East Kolkata Wetlands: Management Action Plan 2021–2026. East Kolkata Wetlands Management Authority and Wetlands International South Asia. Kolkata, India
- Ferger SW, Schleuning M, Hemp A, Howell KM, Böhning-Gaese K (2014) Food resources and vegetation structure mediate climatic effects on species richness of birds. *Glob Ecol Biogeogr* 23(5):541–549
- Fox J, Monette G (1992) Generalized collinearity diagnostics. *J Am Stat Assoc* 87(417):178–183
- Fox J, Weisberg S (2019) An R companion to applied regression, 3rd edn. Sage, Thousand Oaks
- Fraser LH, Keddy PA (2005) The world’s largest wetlands: ecology and conservation. Cambridge University Press, New York
- Ghosh AK (1990) Biological resources of East Calcutta Wetlands. *IJLS & ES* 13(1):10–23
- Ghosh D, Sen S (1987) Ecological history of Calcutta’s wetland conservation. *Environ Conserv* 14(3):219–226
- Ghosh S, Dinda S, Chatterjee ND, Das K (2018) Analyzing risk factors for shrinkage and transformation of East Kolkata Wetland. *India Spat Inf Res* 26(6):661–677
- Giosa E, Mammides C, Zotos S (2018) The importance of artificial wetlands for birds: a case study from Cyprus. *PLoS ONE* 13(5):e0197286
- Goulson D (2014) Pesticides linked to bird declines. *Nature* 511(7509):295–296
- Graham MH (2003) Confronting multicollinearity in ecological multiple regression. *Ecology* 84:2809–2815
- Grimmett R, Inskipp C, Inskipp T (2013) Birds of the Indian subcontinent: India, Pakistan, Sri Lanka, Nepal, Bhutan, Bangladesh and the Maldives. Bloomsbury Publishing, New Delhi
- Gutiérrez-Tapia P, Azócar MI, Castro SA (2018) A citizen-based platform reveals the distribution of functional groups inside a large city from the Southern Hemisphere: e-Bird and the urban birds of Santiago (Central Chile). *Rev Chil Hist Nat* 91(1):3
- Gwelo AS (2019) Principal components to overcome multicollinearity problem. *OJBE* 4(1):79–91
- Hammer Ø, Harper DA, Ryan PD (2001) Paleontological statistics software: package for education and data analysis. *Palaeontol Electron* 4(1):1–9
- Hand book of the world alive (2021) Lynx Edicions. <http://www.hbw.com/> Accessed 06 Oct 2021.
- Harris CM, Calladine JR, Wernham CV, Park KJ (2008) Impacts of piscivorous birds on salmonid populations and game fisheries in Scotland: a review. *Wildlife Biol* 14(4):395–411
- Hughes J, Beiner D, Hughes MJ (2021) Helper functions for regression analysis: package ‘reghelper’ version 1.1.0. <https://cran.rproject.org/web/packages/reghelper/reghelper.pdf>. Accessed 11 Dec 2021
- Husby M (2016) Factors affecting road mortality in birds. *Ornis Fenn* 93:212–224
- Izaguirre MIR, Ramírez-Alán O (2018) Acoustic indices applied to biodiversity monitoring in a Costa Rica dry tropical forest. *J Eocoacoust* 2:5
- Jolliffe IT (2002) Choosing a subset of principal components or variables. Principal component analysis, Springer series in statistics. Springer, New York, pp 111–149
- Jude OC, Iheoma AT, Elizabeth AE, Eja EI (2018) Spatial distribution of ecotourism resources in anambra state: a nearest neighbour analysis approach. *Am Int J Soc Sci* 6(3):29–38
- Kaliyadan F, Kulkarni V (2019) Types of variables, descriptive statistics, and sample size. *Indian Dermatol Online J* 10(1):82–86
- King S, Elphick CS, Guadagnin D, Taft O, Amato T (2010) Effects of landscape features on waterbird use of rice fields. *Waterbirds* 33:151–159
- Koper N, Schmiegelow FK (2006) A multi-scaled analysis of avian response to habitat amount and fragmentation in the Canadian dry mixed grass prairie. *Landscape Ecol* 21:1045–1059
- Krebs CJ (1989) Ecological methodology. Harper and Row Publishers, New York, p 654
- Kurucz K, Purger JJ, Batáry P (2021) Urbanization shapes bird communities and nest survival, but not their food quantity. *Glob Ecol Conserv* 26:e01475
- La Sorte FA, Lepczyk CA, Aronson MF, Goddard MA, Hedblom M, Katti M, MacGregor-Fors I, Mörtberg U, Nilon CH, Warren PS, Williams NS (2018) The phylogenetic and functional diversity of regional breeding bird assemblages is reduced and constricted through urbanization. *Divers Distrib* 24(7):928–938
- Lamy T, Liss KN, Gonzalez A, Bennett EM (2016) Landscape structure affects the provision of multiple ecosystem services. *Environ Res Lett* 11(12):124017
- Landis JR, Koch GG (1977) An application of hierarchical kappa-type statistics in the assessment of majority agreement among multiple observers. *Biometrics* 1:363–374
- Lee MB, Carroll JP (2014) Relative importance of local and landscape variables on site occupancy by avian species in a pine forest, urban, and agriculture matrix. *Forest Ecol Manag* 320:161–170
- Lehtomäki J, Moilanen A (2013) Methods and workflow for spatial conservation prioritization using Zonation. *Environ Model Softw* 47:128–137
- Leibowitz SG (2003) Isolated wetlands and their functions: an ecological perspective. *Wetlands* 23:517–531
- Li J, Heap AD (2011) A review of comparative studies of spatial interpolation methods in environmental sciences: performance and impact factors. *Ecol Inform* 6(3–4):228–241
- Litteral J, Shochat E (2017) The role of landscape-scale factors in shaping urban bird communities. In: Murgui E, Hedblom M (eds) Ecology and conservation of birds in urban environments. Springer, Cham, pp 135–159
- Ludecke D, Makowski D, Waggoner P (2019) Performance: assessment of regression models performance. R package (ver. 4.2). <https://CRAN.R-project.org/package=performance>. Accessed 11 Dec 2021.
- Manly BF (1994) Multivariate statistical methods: a primer. CRC Press, Boca Raton, p 215

- Mazerolle MJ (2020) Model selection and multimodel inference using the AICcmodavg package. <https://mirror.marwan.ma/cran/web/packages/AICcmodavg/vignettes/AICcmodavg.pdf>. Accessed 11 Dec 2021
- Mazumdar S, Saha GK (2016) Wetlands in urban landscapes: problems and potentials. In: Saha GK (ed) *Wetland: crisis and options*. Astral International Pvt. Ltd., New Delhi, pp 385–400
- McElfish JM, Kihlsinger RL, Nichols S (2008) Setting buffer sizes for wetlands. *Natl Wetlands News* 30(2):6–17
- McGarigal K (2015) FRAGSTATS help. University of Massachusetts, Amherst
- McKinney ML (2006) Urbanization as a major cause of biotic homogenization. *Biol Conserv* 127(3):247–260
- Millennium Ecosystem Assessment (MEA) (2005) *Ecosystems and Human Well-being: Synthesis*. Island Press, Washington DC
- Moilanen A, Anderson BJ, Eigenbrod F, Heinemeyer A, Roy DB, Gillings S, Armsworth PR, Gaston KJ, Thomas CD (2011) Balancing alternative land uses in conservation prioritization. *Ecol Appl* 21(5):1419–1426
- Morelli F, Benedetti Y, Šimová P (2018) Landscape metrics as indicators of avian diversity and community measures. *Ecol Indic* 90:132–141
- Mukherjee J, Chakraborty G (2016) Commons vs commodity: Urban environmentalisms and the transforming tale of the East Kolkata Wetlands. *Urbanities* 6(2):78–91
- O’Neil LJ, Carey AB (1986) Introduction: When habitats fail as predictors. In: Verner J, Morrison ML, Ralph CJ (eds) *Wildlife 2000: Modeling habitat relationships of terrestrial vertebrates*. University of Wisconsin Press, Madison, pp 207–208
- Ouabo RE, Sangodoyin AY, Ogundiran MB (2020) Assessment of ordinary Kriging and inverse distance weighting methods for modeling chromium and cadmium soil pollution in E-waste sites in Douala, Cameroon. *J Health Pollut* 10(26):200605
- Palomino D, Carrascal LM (2006) Urban influence on birds at a regional scale. A case study with the avifauna of northern Madrid province. *Landscape Urban Plan* 77:276–290
- Parihar SM, Sarkar S, Dutta A, Sharma S, Dutta T (2013) Characterizing wetland dynamics: a post-classification change detection analysis of the East Kolkata Wetlands using open source satellite data. *Geocarto Int* 28(3):273–287
- Pasher J, Mitchell SW, King DJ, Fahrig L, Smith AC, Lindsay KE (2013) Optimizing landscape selection for estimating relative effects of landscape variables on ecological responses. *Landscape Ecol* 28(3):371–383
- Rajpar MN, Zakaria M (2011) Bird species abundance and their relationship with microclimate and habitat variables at Natural Wetland Reserve, Peninsular Malaysia. *Int J Zool* 2011:758573. <https://doi.org/10.1155/2011/758573>
- Ramsar Convention (2002) Information Sheet on Ramsar Wetlands. <https://riss. Ramsar.org/RISApp/files/RISrep/IN1208RIS.pdf>. Accessed 06 Oct 2021
- Ripley B (2011) MASS: support functions and datasets for Venables and Ripley’s MASS. R Package Version 7:3–29
- Saha S, Basu P, Saha T (2014) Size does matter: role of large size wetlands in the diversity of wetland-dependent bird species of East Kolkata Wetlands. In: Das C (ed) *Current perspectives in natural resource management*. Progressive Publisher, Kolkata, pp 49–67
- Saha S, Saha T, Basu P (2017) Seasonal changes in zooplankton and macrofauna populations of the East Calcutta Wetland fish ponds. *Proc Zool Soc* 70:156–164
- Sarkar S, Parihar SM (2014) Mapping of cropping pattern of East Kolkata Wetland Area using multi-temporal satellite data. *J Geomat* 8(1):90–95
- Shannon CE, Weaver W (1949) *The mathematical theory of communication*. University of Illinois Press, Urbana
- Shochat E, Lerman S, Fernández-Juricic E (2010) Birds in urban ecosystems: population dynamics, community structure, biodiversity, and conservation. In: Aitkenhead-Peterson J, Volder A (eds) *Urban ecosystem ecology*. Agronomy Monograph. Wiley, USA, pp 75–86
- Sica YV, Quintana RD, Bernardos JN, Calamari NC, Gaviera-Pizarro GI (2020) Wetland bird response to habitat composition and configuration at multiple spatial scales. *Wetlands* 40(6):2513–2525
- Silva CP, García CE, Estay SA, Barbosa O (2015) Bird richness and abundance in response to urban form in a latin american city: Valdivia, Chile as a case study. *PLoS ONE* 10(9):e0138120. <https://doi.org/10.1371/journal.pone.0138120>
- Siriwardena GM, Cooke IR, Sutherland WJ (2012) Landscape, cropping and field boundary influences on bird abundance. *Ecography* 35(2):162–173
- Smith C, Warren M (2019) *GLMs in R for ecology*. Amazon Publishing, Seattle
- Sneep RPH, Kooijmans JL, Kwak RGM, Foppen RPB, Parsons H, Awasthy M, Sierdsema HLK, Marzluff JM, Fernandez-Juricic E, de Laet J, van Heezik YM (2015) Urban bird conservation: presenting stakeholder-specific arguments for the development of bird-friendly cities. *Urban Ecosyst* 19(4):1535–1550
- Sohil A, Sharma N (2020) Assessing the bird guild patterns in heterogeneous land use types around Jammu, Jammu and Kashmir, India. *Ecol Process* 9:49
- Sterling EJ, Betley E, Sigouin A, Gomez A, Toomey A, Cullman G, Malone C, Pekor A, Arengo F, Blair M, Filardi C (2017) Assessing the evidence for stakeholder engagement in biodiversity conservation. *Biol Conserv* 209:159–171
- St-Louis V, Forester JD, Pelletier D, Bélisle M, Desrochers A, Rayfield B, Wulder MA, Cardille JA (2014) Circuit theory emphasizes the importance of edge-crossing decisions in dispersal-scale movements of a forest passerine. *Landscape Ecol* 29(5):831–841
- Sultana M, Corlatti L, Storch I (2021) The interaction of imperviousness and habitat heterogeneity drives bird richness patterns in south Asian cities. *Urban Ecosyst* 24(2):335–344
- Sundar KG, Kittur S (2013) Can wetlands maintained for human use also help conserve biodiversity? Landscape-scale patterns of bird use of wetlands in an agricultural landscape in north India. *Biol Conserv* 168:49–56
- Thenail C, Joannon A, Capitaine M, Souchère V, Mignolet C, Schermann N, Di Pietro F, Pons Y, Gauchere C, Viaud V, Baudry J (2009) The contribution of crop-rotation organization in farms to crop-mosaic patterning at local landscape scales. *Agric Ecosyst Environ* 131(3–4):207–219
- Touhami F, Bazairi H, Badaoui B, Morabbi A, Benhoussa A (2019) Structure and spatial organization of macrobenthic fauna of intertidal habitats frequented by wintering shorebirds at Merja Zerga lagoon Moroccan Ramsar Site. *Cah Biol Mar* 60(1):41–50
- van Steenderen C (2020) BinMat: a molecular genetics tool for processing binary data obtained from fragment analysis in R. Authorea Preprints. <https://CRAN.R-project.org/package=BinMat>. Accessed 06 Oct 2021
- Wilcoxon CA, Walk JW, Ward MP (2018) Use of cover crop fields by migratory and resident birds. *Agric Ecosyst Environ* 252:42–50
- Zhang Y, Fox AD, Cao L, Jia Q, Lu C, Prins HH, de Boer WF (2018) Effects of ecological and anthropogenic factors on waterbird abundance at a Ramsar Site in the Yangtze River Floodplain. *Ambio* 48:293–303
- Zuur A, Ieno EN, Smith GM (2007) *Analyzing ecological data*. Springer, New York
- Zuur AF, Ieno EZ, Walker NJ, Saveliev AA, Smith GM (2009) GLM and GAM for count data. In: Zuur AF, Ieno EN, Walker N, Saveliev AA, Smith GM (eds) *Mixed effects models and extensions in ecology with R Statistics for Biology and Health*. Springer, New York, pp 209–243

Publisher’s Note

Springer Nature remains neutral with regard to jurisdictional claims in published maps and institutional affiliations.

Submit your manuscript to a SpringerOpen® journal and benefit from:

- Convenient online submission
- Rigorous peer review
- Open access: articles freely available online
- High visibility within the field
- Retaining the copyright to your article

Submit your next manuscript at ► [springeropen.com](https://www.springeropen.com)